

$7 \times 5 =$

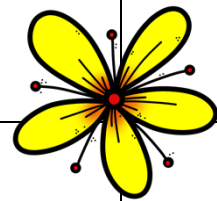
$8 \times 5 =$

$2 \times 5 =$

$5 \times 5 =$

$9 \times 5 =$

$10 \times 5 =$



$5 \times 5 =$

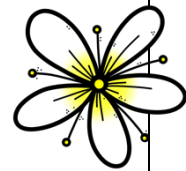
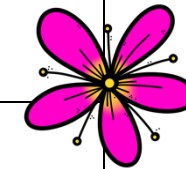
$10 \times 5 =$

$7 \times 5 =$

$6 \times 5 =$

$4 \times 5 =$

$8 \times 5 =$



$3 \times 5 =$

$6 \times 5 =$

$8 \times 5 =$

$9 \times 5 =$

$5 \times 5 =$

$7 \times 5 =$

$6 \times 5 =$

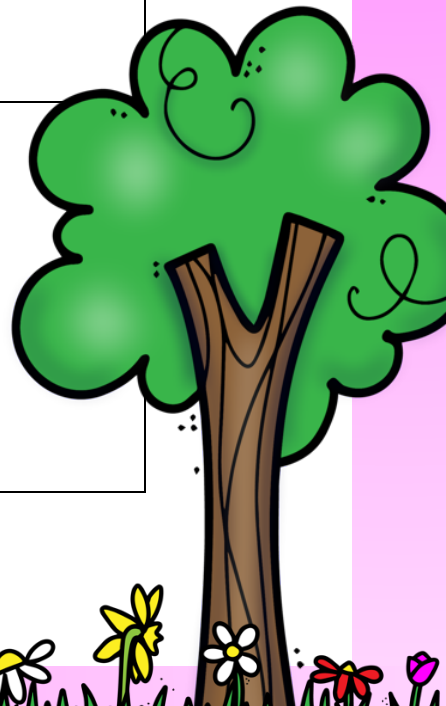
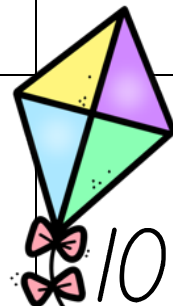
$4 \times 5 =$

$10 \times 5 =$

$2 \times 5 =$

$3 \times 5 =$

$4 \times 5 =$



3/4 op een rij tafel van 5

